



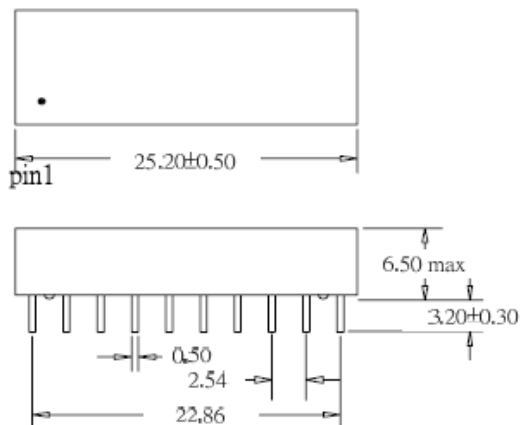
- ★ Designed to meet IEEE802.3u requirement
- ★ Primary inductance 350 μ H min. with 8mA DC Bias
- ★ Operating temperature range: 0°C to +70°C
- ★ Wave solder condition : Maximum temperature is 260°C+/-3°C , time is 5~6sec (Refer to SONY SS-00254-4 standard).

Specifications

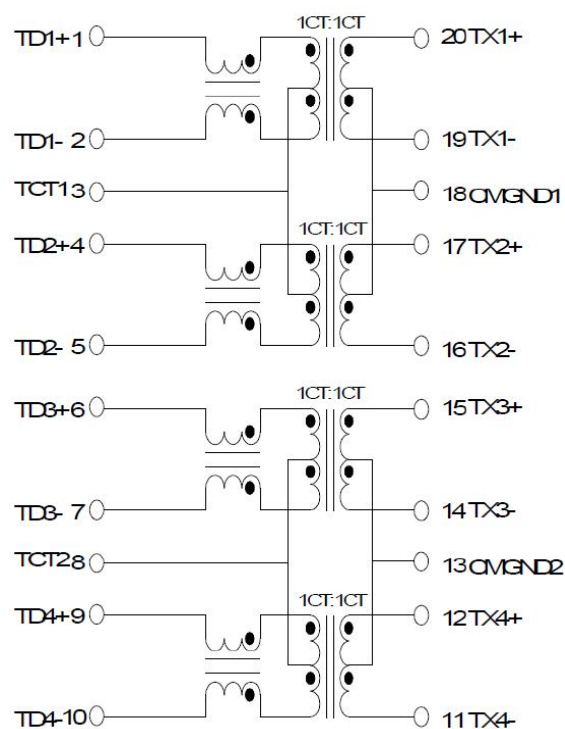
Part Number	Turn Ratio TX/RX ($\pm 3\%$)	OCL @ 100KHz/0.1V With 8mA DC Bias	CWW @ 100KHz/0.1V (TX/RX) (pF max)	LL @ 100KHz/0.1V (uH max)	DCR @ 10KHz/0.1V (Ω max)	HI-POT (Vrms)
LT2004D	1CT:1CT	350 uH min	80	0.5	0.9	1500

Specifications continue

Part Number	Insetion loss (dB max)	Return loss (dB min)				Cross talk (dB min)	
	0.3-100MHz	0.3-30MHz	40MHz	50MHz	60-80MHz	0.3-30 MHz	60-100 MHz
LT2004D	-1.1	-18	-14.4	-13.1	-12	-40	-33

Dimension


Unit: mm

Schematic


Data sheet subject to change without notice

Head Office & Factory
 Build-B, 5F, No. 248-39, Hsing-Shen Rd., Cheng-Jeng Dist.,
 Lin-Kung Proc. Zone, Kaohsiung, Taiwan, R.O.C.

TEL:886-7-8153618 Fax:886-7-8150747 sales@magcom.com.tw

(04/2012) Rev.C

Marking



Remark:
XXXXXXX=PART NUMBER
YYWW-###DATE CODE , YY=YEAR · WW=WEEK
###=Control Code

Revision	Realized By	Modification Description	Date	Last Pages
C01	PaulSu	Cww update	APR-23-2012	2